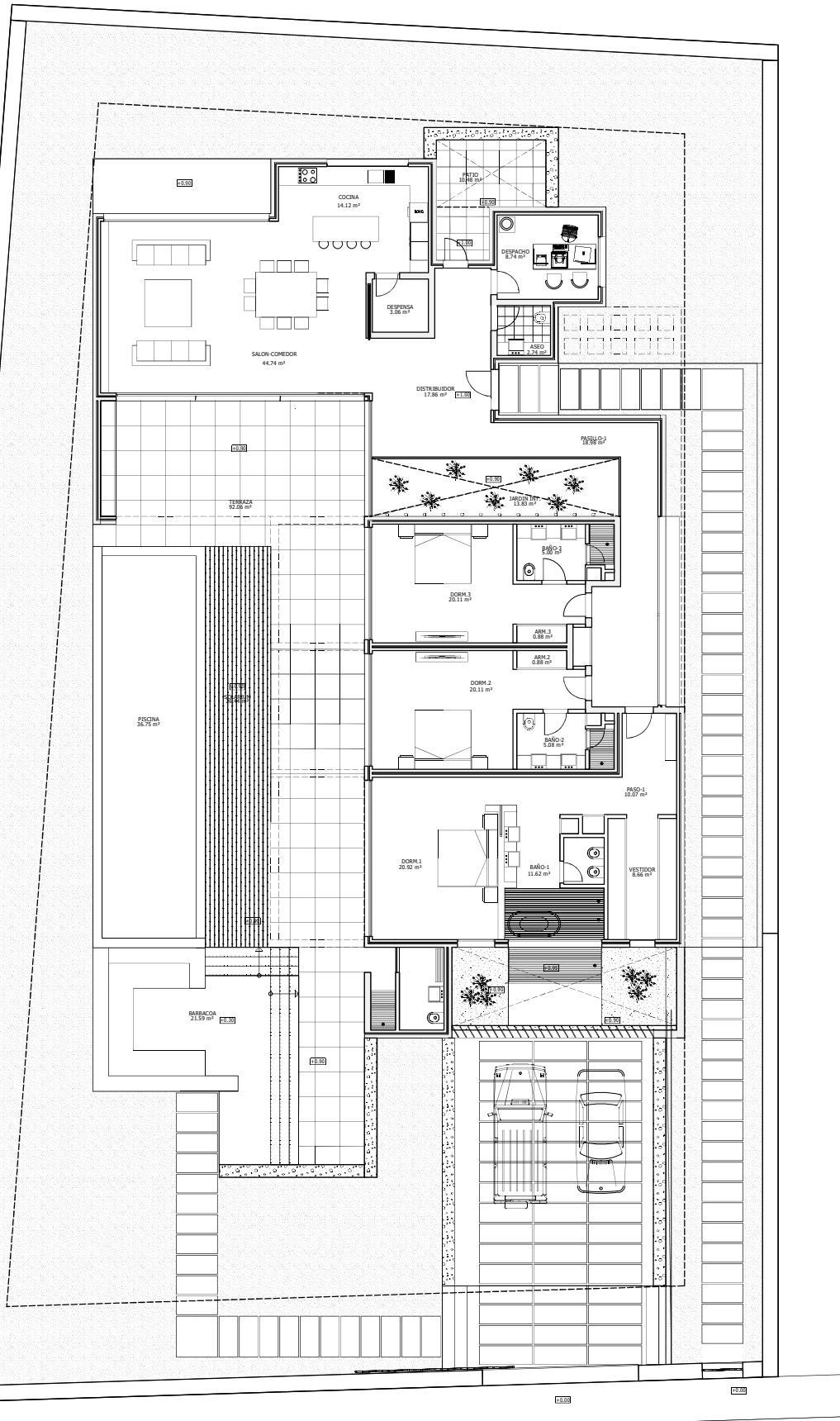


PARCELA 15 1147.65 m²

SUP. CONSTRUIDA P.B.
263.82 m²



DENOMINACION	SUP. UTIL
SALON-COMEDOR	44.74 m ²
COCINA	14.12 m ²
DESPENSA	3.06 m ²
DESPECHO	8.74 m ²
DISTRIBUIDOR	17.86 m ²
ASEO	2.24 m ²
PASADIZO	13.82 m ²
PASO.1	11.62 m ²
DORM.1	20.92 m ²
BAÑO.1	11.62 m ²
PASO.2	10.97 m ²
VESTIDOR	8.66 m ²
DORM.2	20.11 m ²
BAÑO.2	5.08 m ²
ARM.2	0.88 m ²
DORM.3	20.11 m ²
BAÑO.3	5.08 m ²
ARM.3	0.88 m ²
TOTAL SUMA	213.57 m ²